

# AMBER™

by V&J FURNISHINGS



# RUNWAY

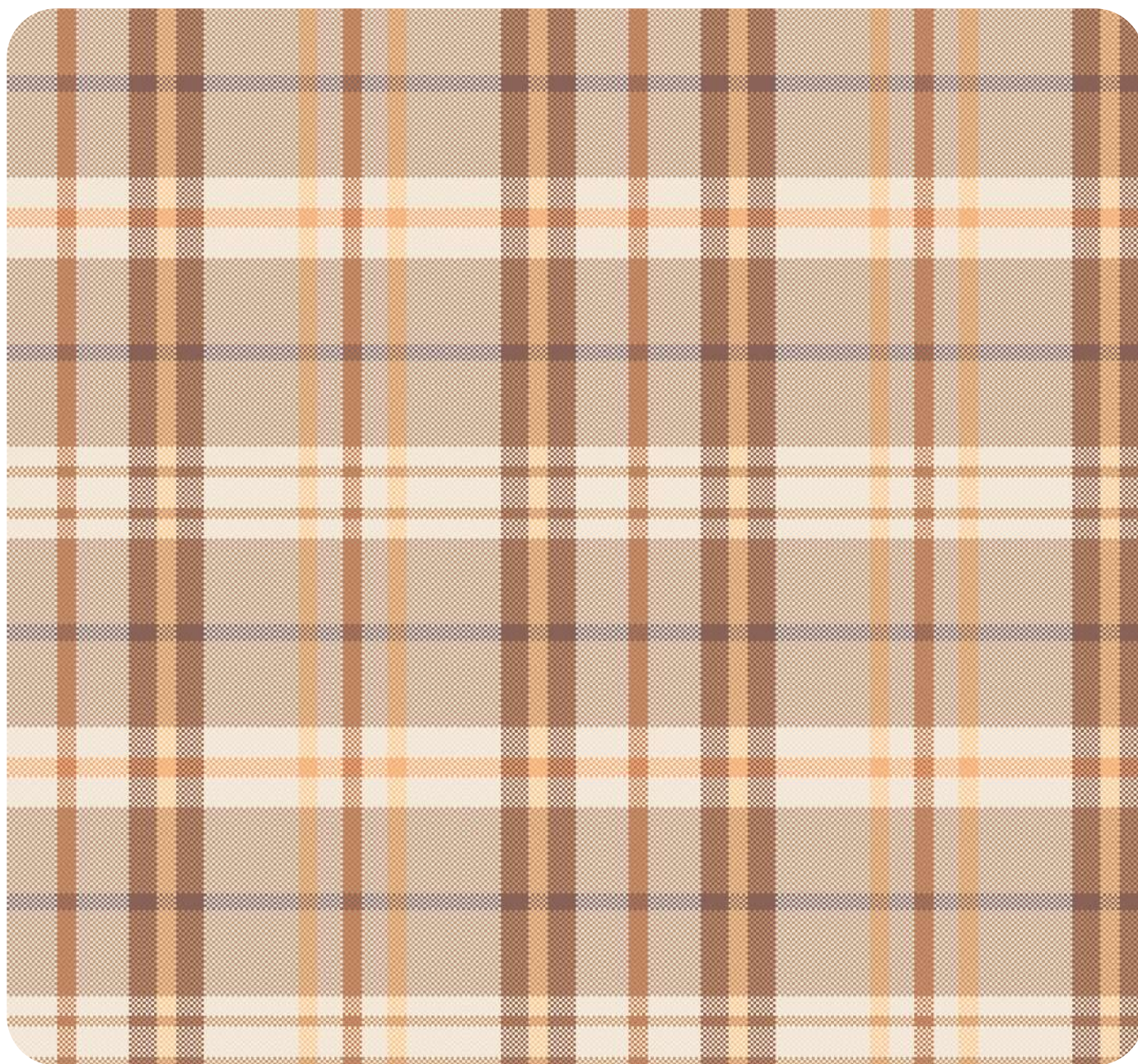
MARKETED BY



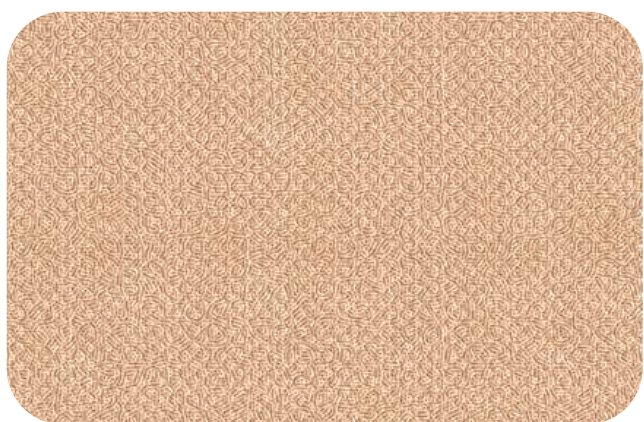
**In-Lite**  
FURNISHINGS PVT. LTD.

+91 94476 67660  
www.inlitefurnishings.com

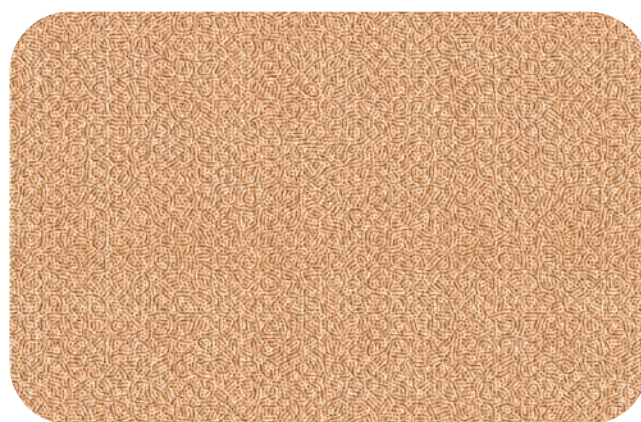




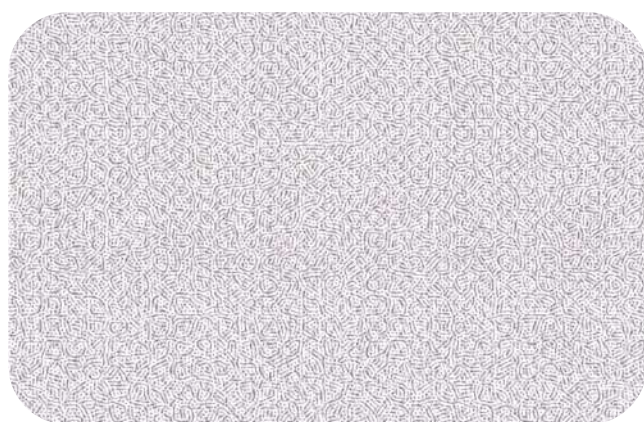
SR.NO :303



SR.NO :301



SR.NO :302

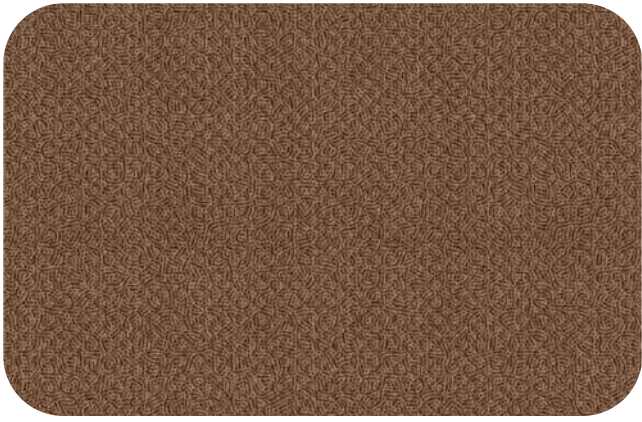


SR.NO :304

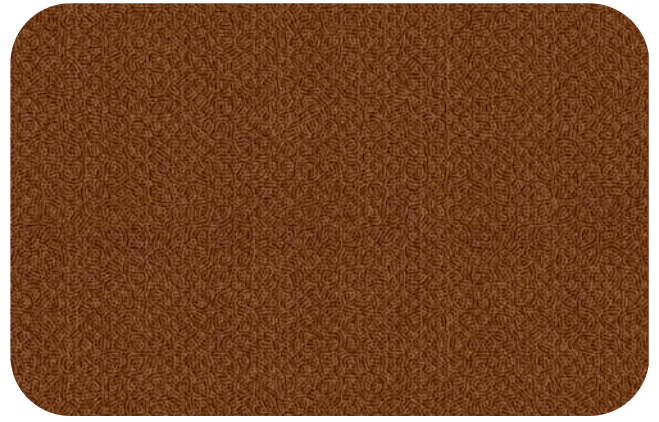


SR.NO :305





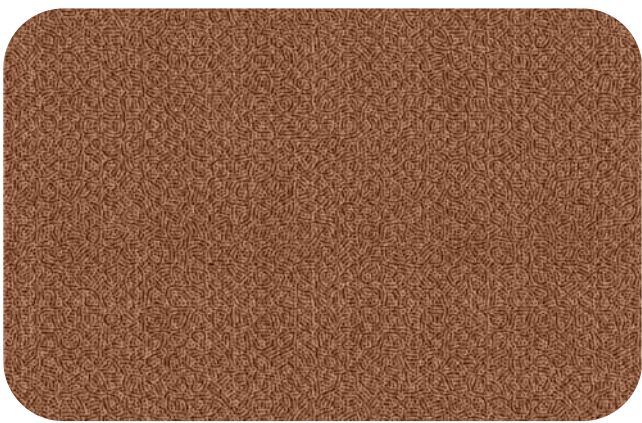
SR.NO :306



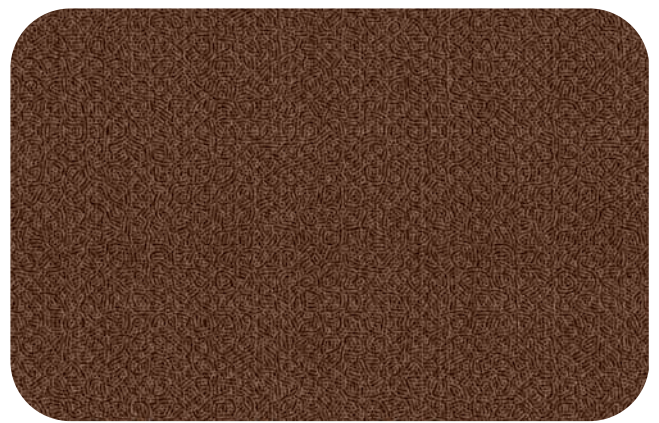
SR.NO :307



SR.NO :308

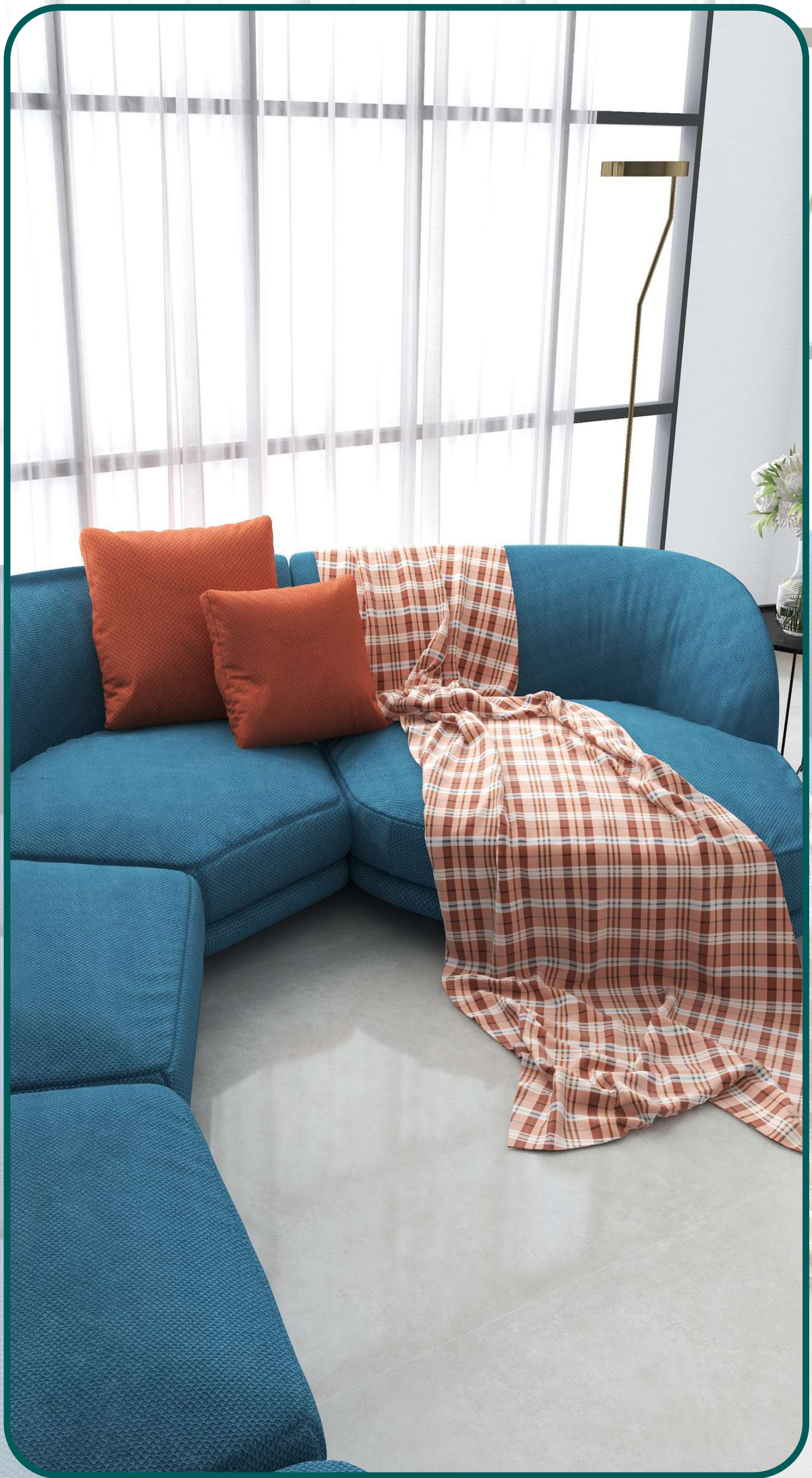


SR.NO :309



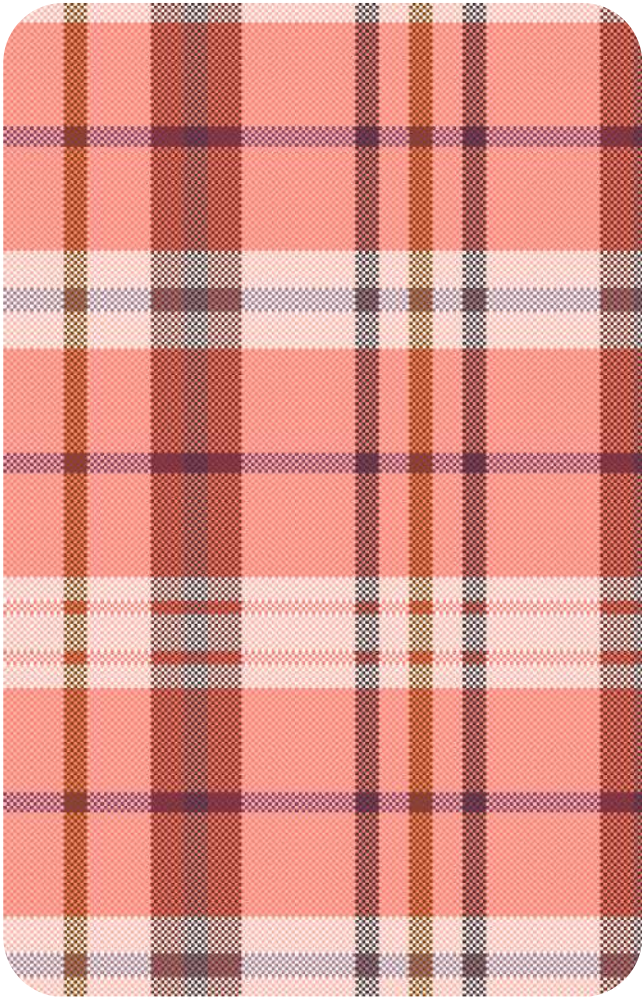
SR.NO :310



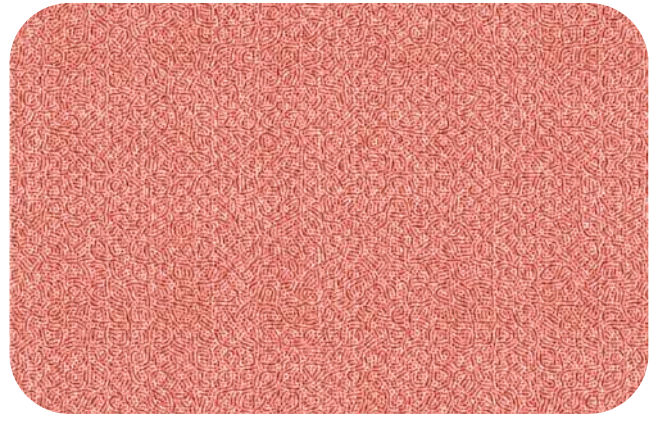


**AMBER**<sup>TM</sup>  
by V&J FURNISHINGS

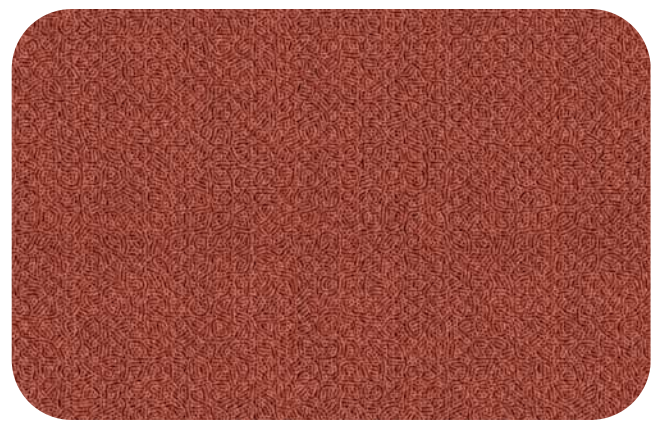




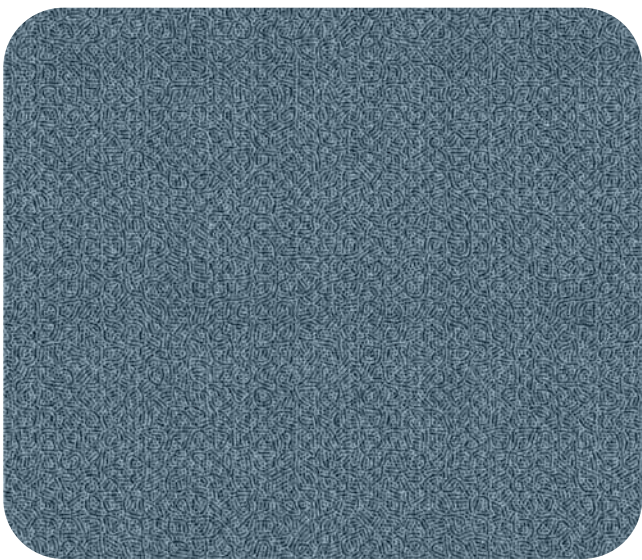
SR.NO :313



SR.NO :311



SR.NO :312



SR.NO :314

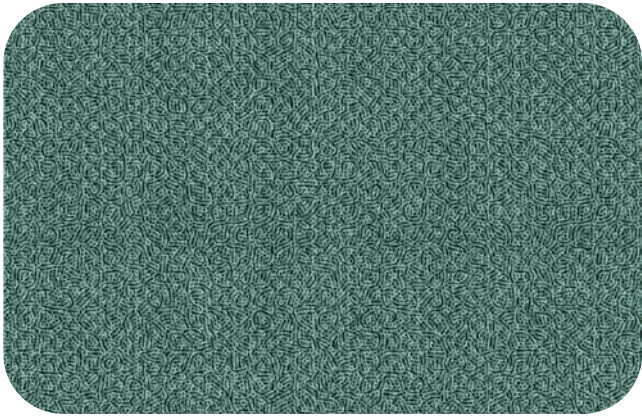


SR.NO :315

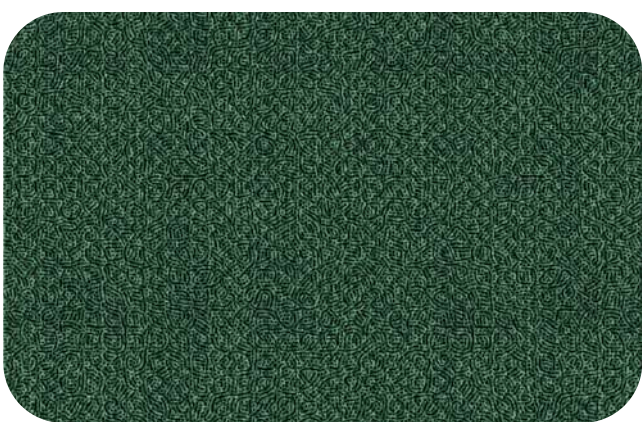


SR.NO :316





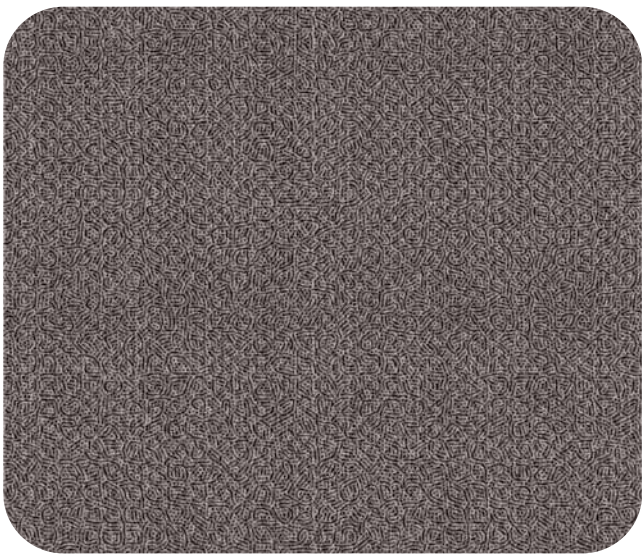
SR.NO :317



SR.NO :318



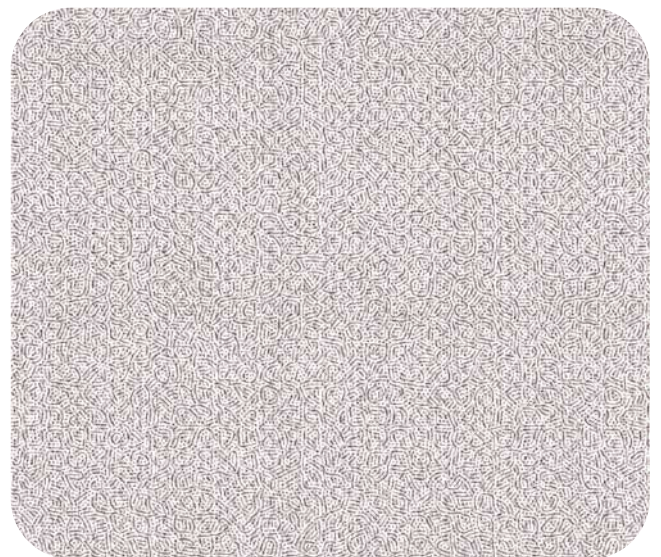
SR.NO :319



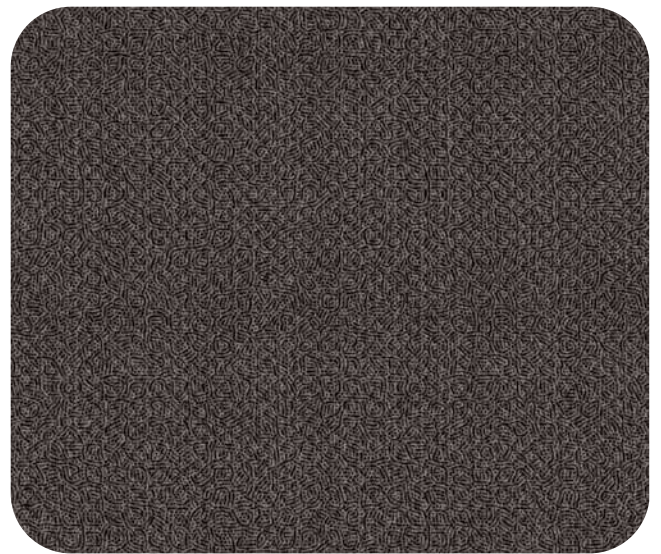
SR.NO :322



SR.NO :321



SR.NO :320



SR.NO :323




# AMBER™

by V&J FURNISHINGS



## RUNWAY

### Performance Specifications

ARTICLE NAME	MATERIAL DESCRIPTION	WIDTH	WEIGHT	COMPOSITION	MARTINDALE (rubs)	END USE
RUNWAY	POLYESTER FABRIC	140 CMS	360 GSM (+/- 5%)	100% POLYESTER	35000 CYCLES	

COLOURS MAY VARY LOT-TO-LOT

MARKETED BY



**In-Lite®**  
FURNISHINGS PVT. LTD.

**+91 94476 67660**  
[www.inlitefurnishings.com](http://www.inlitefurnishings.com)